

James P Cole Industrial

ADDRESS:
Property Bundle

OWNER:
RACER Trust, City of Flint,
Genesee County Land Bank

MUNICIPALITY:
City of Flint

APROX. ACRES:

41.79

CROSS STREETS:

James P Cole Blvd
& Leith St

WATER:

16"-24" WM on
Stewart & behind
industrial park

ENERGY:

Consumers

STORMWATER:

STM throughout
industrial park

SEWER:

12" SSM on Stewart
and running behind
industrial park

ENVIRONMENTAL:

RACER Trust
Environmental
Reports Available

WETLANDS:

No

FLOODPLAIN:

No

ZONING:

Light or Heavy
Industrial

INCENTIVES:

Available - New
Market Tax Credits
Eligible Area

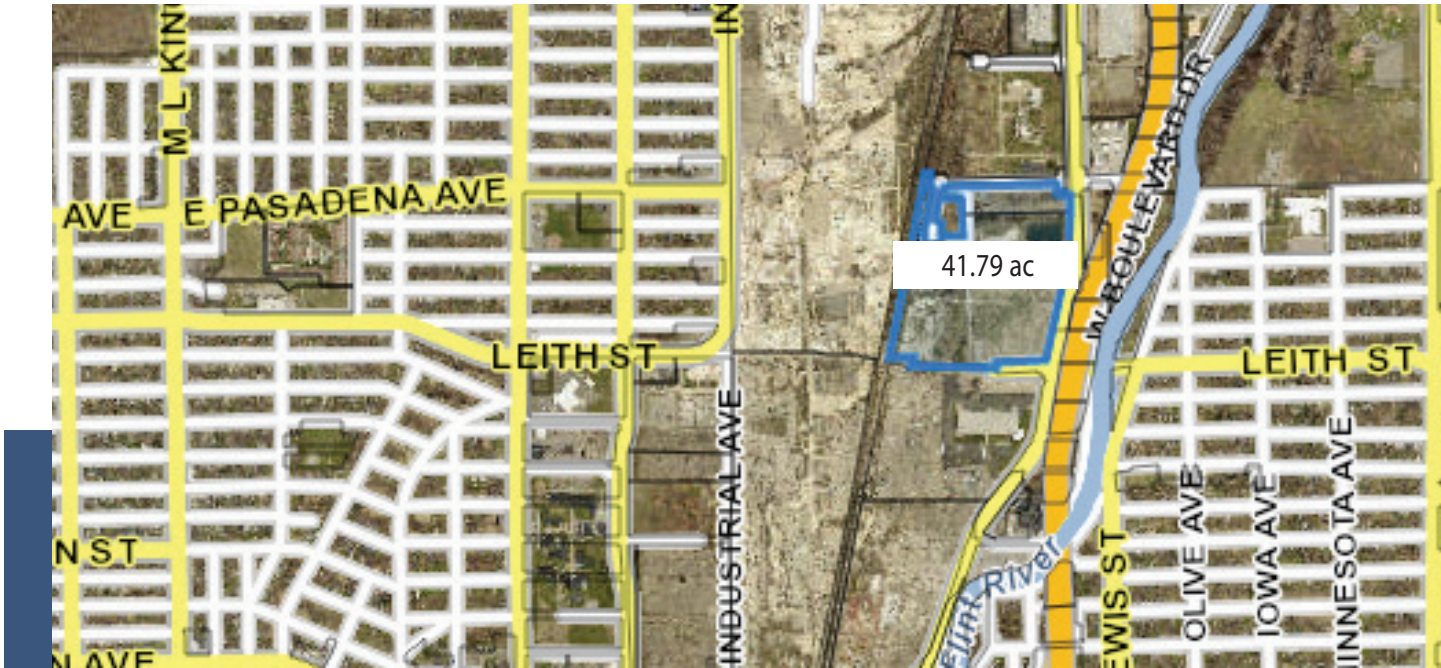
DISTANCE TO FREEWAY:

.5 Miles to I-475

ADDITIONAL INFO:

- CSX Rail Site
- May be able to provide; 319 psig natural gas pressure with up to 1,000 MCFH, low-voltage distribution, up to 5MW, high-voltage distribution from 5 MW to 100 MW and competitive rate options.





NOTES:

CONTACT INFORMATION:

Steven Black, MBA, CEcD
Transaction Manager
RACER Trust
Sblack@racertrust.org
(989) 415-9950

Kevin Schronce
Lead Planner
City Of Flint
kschronce@cityofflint.com
(810) 766-7426 ext. 3028

Michele Wildman
Executive Director
Genesee County Land Bank
mwildman@thelandbank.org
(810) 257-3088 ext. 521