

Genesee Industrial

ADDRESS:
E Stanley between
N Dort & N Saginaw

OWNER:
RACER Trust

MUNICIPALITY:
Genesee Township

APROX. ACRES:

80.35

CROSS STREETS:

E Stanley St & N Dort

WATER:

12"-16" WM on Dort
Hwy East of site

ENERGY:

Consumers

STORMWATER:

Available

SEWER:

8" SSM near site along
Stanley, 10" SSM on
Dort Hwy to East

ENVIRONMENTAL:

No Restrictions

WETLANDS:

No

FLOODPLAIN:

No

ZONING:

Light or Heavy
Industrial

INCENTIVES:

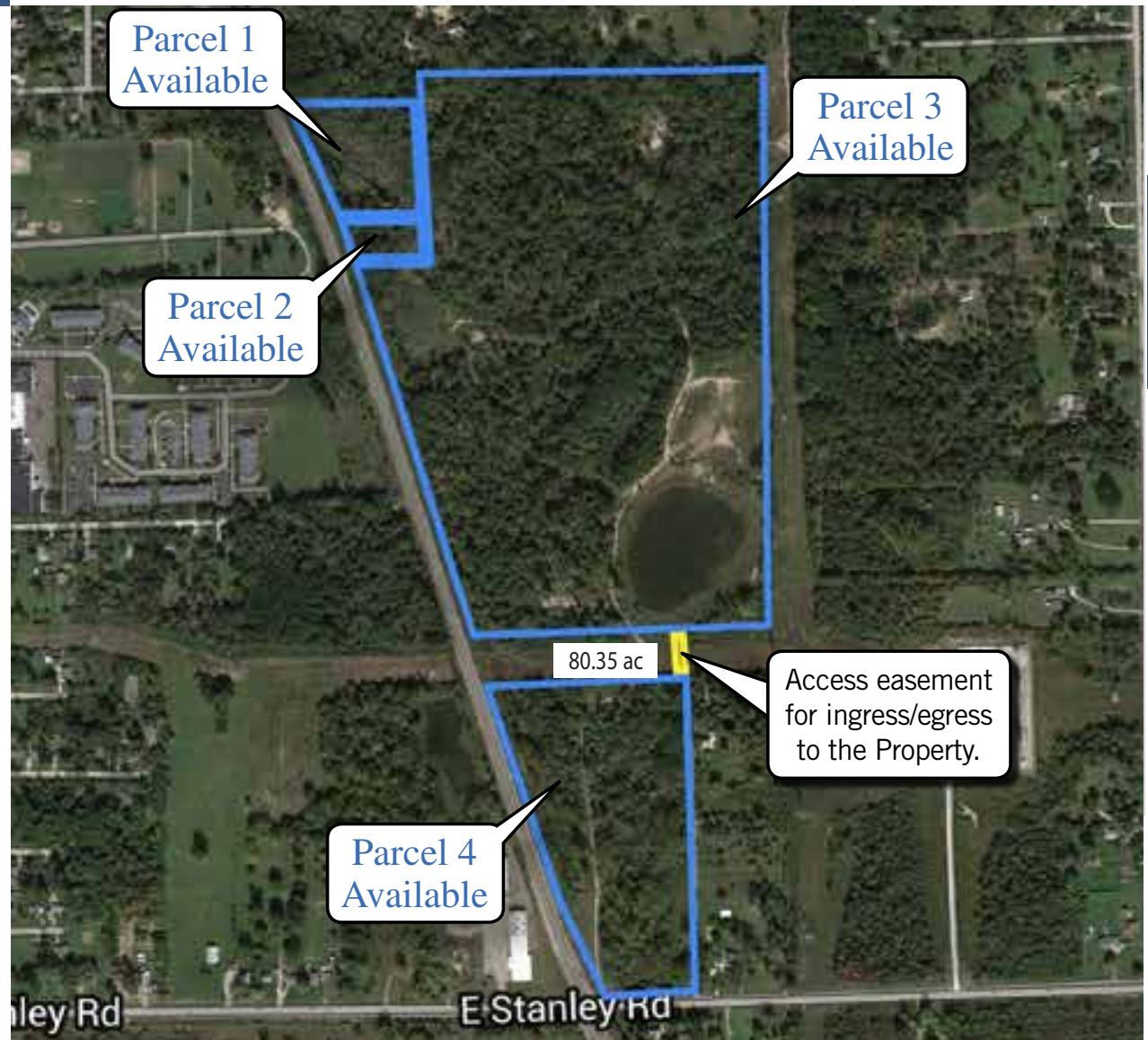
Available - New Market
Tax Credits Eligible
Area

DISTANCE TO FREEWAY:

2 Miles to I-475

ADDITIONAL INFO:

- CSX Rail Site
- Adjacent to 138 kV & 46kV Consumers Energy distribution substations.
- Provide increased capacity & easier redundancy options.
- 99.998% predicted reliability for 138 kV.
- 99.996% predicted reliability for 46 kV.
- Substations allow the servicing of a wide range of electric demands with minimal line construction.





NOTES:

CONTACT INFORMATION:

Steven Black, MBA, CEcD
Transaction Manager
RACER Trust
Sblack@racertrust.org
(989) 415-9950