

E Court Street Commercial

ADDRESS:
3325 E Court St

OWNER:
Genesee County Land Bank

MUNICIPALITY:
City of Flint

APROX. ACRES:

1.323

CROSS STREETS:

Court St

WATER:

12"-14" WM on both
Court & Averill

ENERGY:

Consumers

STORMWATER:

STM on both Court &
Averill

SEWER:

15" SSM on Averill

ENVIRONMENTAL:

Completed by Land
Bank, No Known
Restrictions

WETLANDS:

No

FLOODPLAIN:

No

ZONING:

Commercial

INCENTIVES:

Available - New
Market Tax Credits
Eligible Area

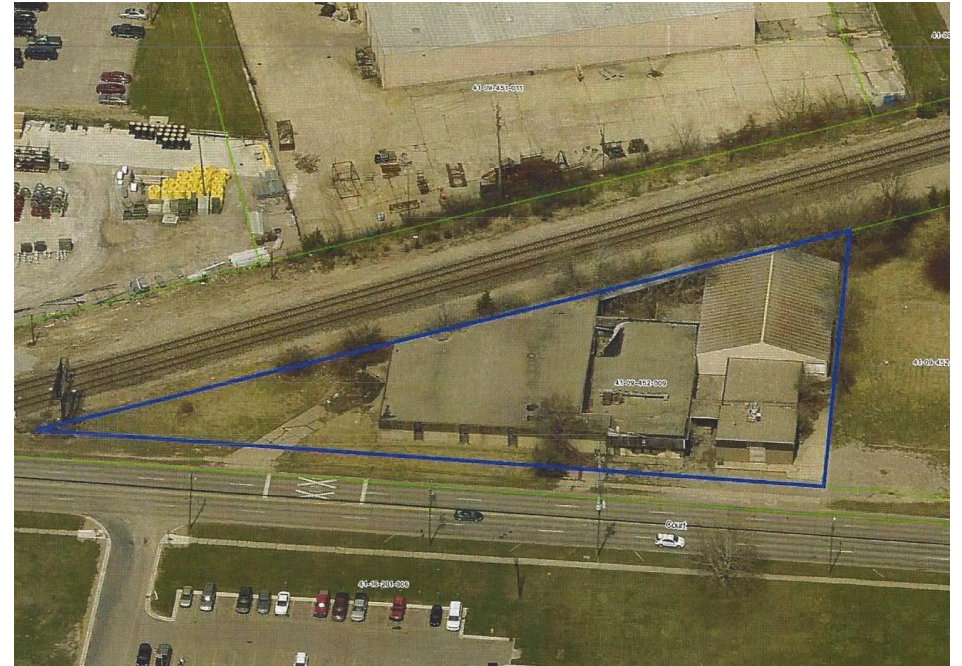
DISTANCE TO FREEWAY:

.75 Miles to I-69

ADDITIONAL INFO:

- Small Industrial or
Retail.





NOTES:

CONTACT INFORMATION:

Michele Wildman
Executive Director
Genesee County Land Bank
mwildman@thelandbank.org
(810) 257-3088 ext. 521