

Dort Highway Industrial

ADDRESS:
Near 10800 S Dort Hwy

OWNER:
RACER Trust

MUNICIPALITY:
Grand Blanc Township

APROX. ACRES:

20.44

CROSS STREETS:

Route 54 & Reld Rd

WATER:

12" WM on Dort Hwy

ENERGY:

Consumers

STORMWATER:

Available

SEWER:

Unknown size SSM on Dort Hwy

ENVIRONMENTAL:

RACER Trust Environmental Reports Available

WETLANDS:

No

FLOODPLAIN:

No

ZONING:

Light Industrial

INCENTIVES:

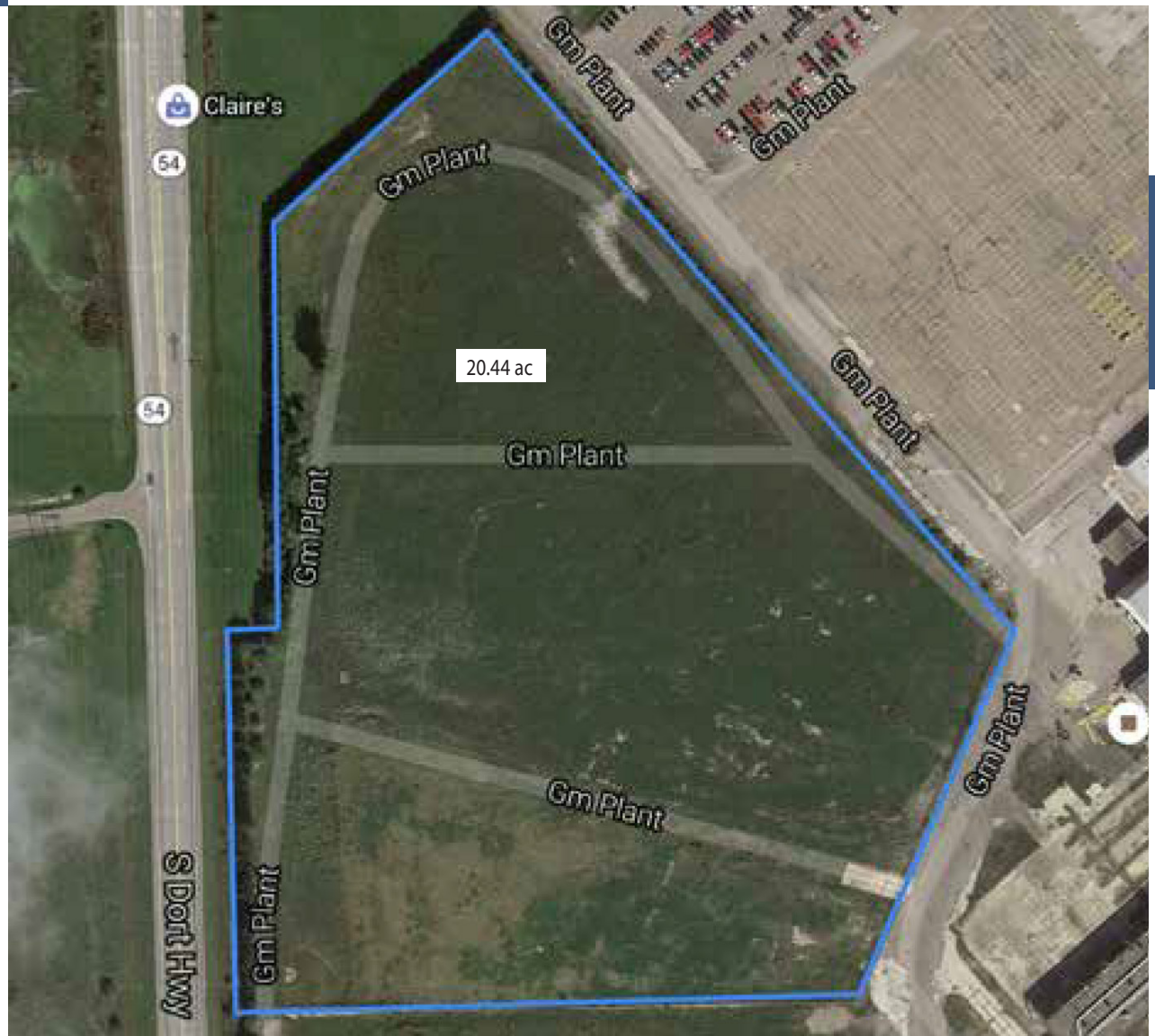
Renaissance Zone
- Next Michigan Development Corporation Incentives
- New Market Tax Credits Eligible Area

DISTANCE TO FREEWAY:

4 Miles to I-475

ADDITIONAL INFO:

- No rail available.
- 8" sewer line located across Dort Highway <500' from property's centerpoint; 12" sewer line located on adjacent General Motors property <1000' from property's centerpoint.
- 138 kV and 46 kV lines located along Dort Highway, the property's western boundary.





NOTES:

CONTACT INFORMATION:

Steven Black, MBA, CEcD
Transaction Manager
RACER Trust
Sblack@racertrust.org
(989) 415-9950