

Dort Hwy Commercial

ADDRESS:
1819 S Dort Hwy

OWNER:
Genesee County Land Bank

MUNICIPALITY:
City of Flint

APROX. ACRES:

3.634

CROSS STREETS:

Dort Hwy

WATER:

16"-24" WM on Dort,
6"-10" WM on Lapeer

ENERGY:

Consumers

STORMWATER:

STM on both Dort &
Lapeer

SEWER:

10" SSM on both Dort
& Lapeer

ENVIRONMENTAL:

Completed by Land
Bank, No Known
Restrictions

WETLANDS:

No

FLOODPLAIN:

No

ZONING:

Commercial

INCENTIVES:

Available - New
Market Tax Credits
Eligible Area

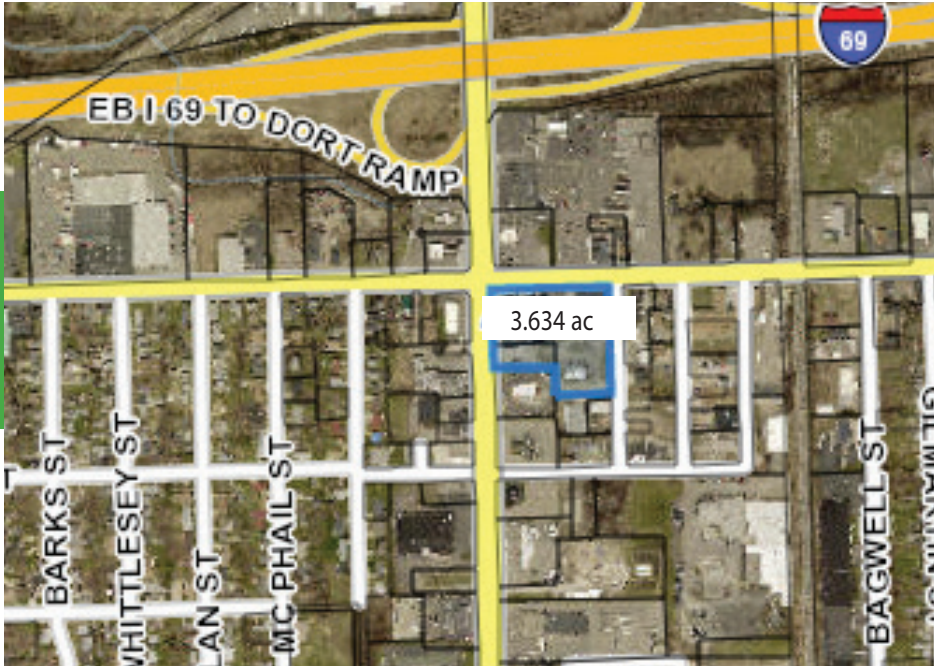
DISTANCE TO FREEWAY:

.25 Miles to I-69

ADDITIONAL INFO:

- Small Distribution
Location or Retail.





NOTES:

CONTACT INFORMATION:

Michele Wildman
Executive Director
Genesee County Land Bank
mwildman@thelandbank.org
(810) 257-3088 ext. 521