

Davison Rd Industrial

ADDRESS:
Donegal St

OWNER:
RACER Trust

MUNICIPALITY:
City of Burton

APROX. ACRES:

56.21

CROSS STREETS:

Davison Rd
& Genesee Rd

WATER:

16" WM on Davison

ENERGY:

Consumers

STORMWATER:

Catch basins along
Davison

SEWER:

Various SSM pipes 8"+
along Davison, Center
& into site

ENVIRONMENTAL:

RACER Trust
Environmental
Reports Available

GEOTECHNICAL:

Top Soil Removed
Back filled with
varying materials

WETLANDS:

No

FLOODPLAIN:

No

ZONING:

Light or Heavy
Industrial

INCENTIVES:

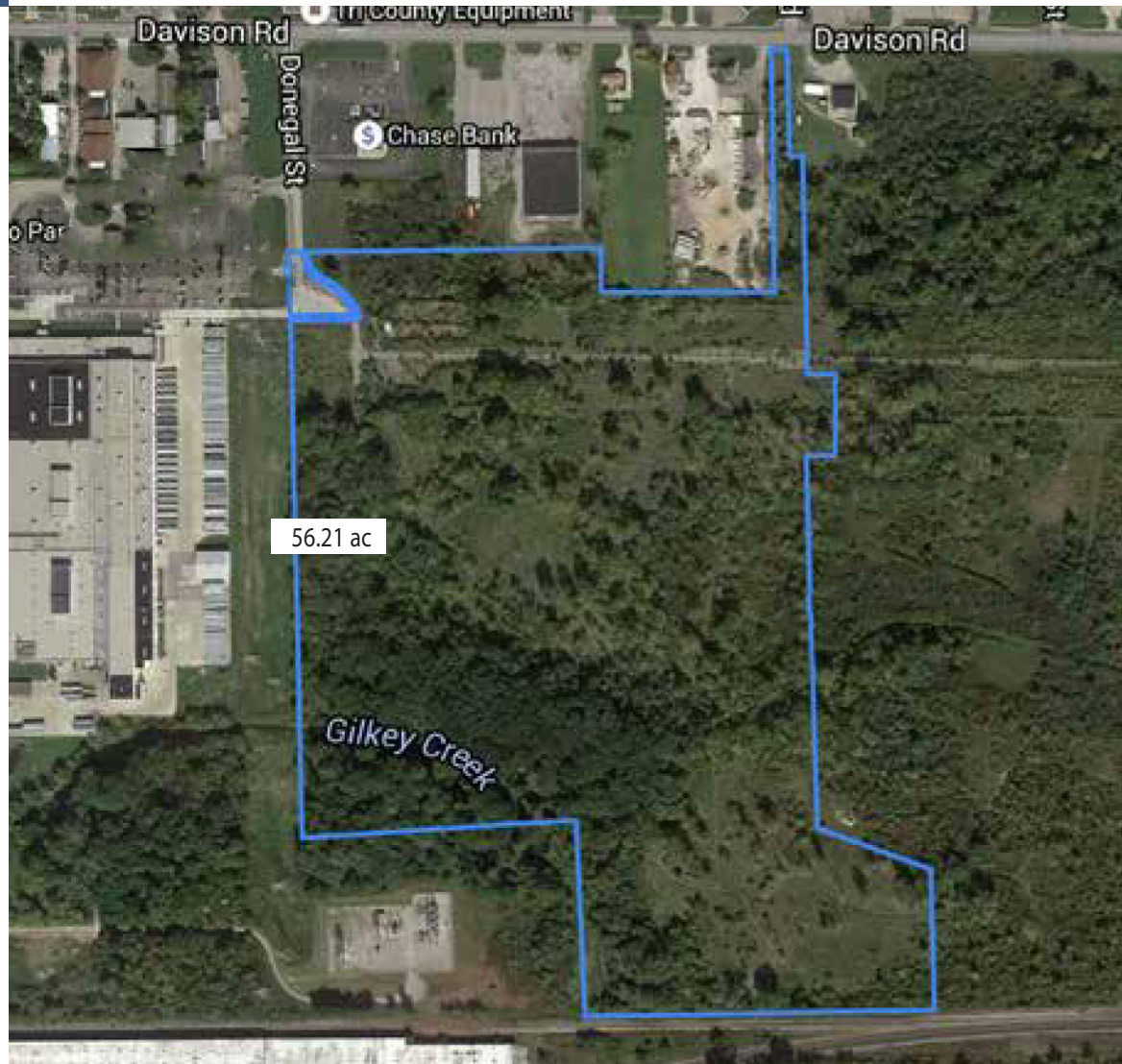
Available

DISTANCE TO FREEWAY:

4 Miles to I-475

ADDITIONAL INFO:

- CN Rail. This municipality has enacted high-volume discount rates for water and sewer over 500,000cf per month.
- Adjacent to 138kV and 46kV systems; neighboring bulk power substation provides increased capacity and easier redundancy options for either system.





NOTES:

CONTACT INFORMATION:

Steven Black, MBA, CEcD
Transaction Manager
RACER Trust
Sblack@racertrust.org
(989) 415-9950